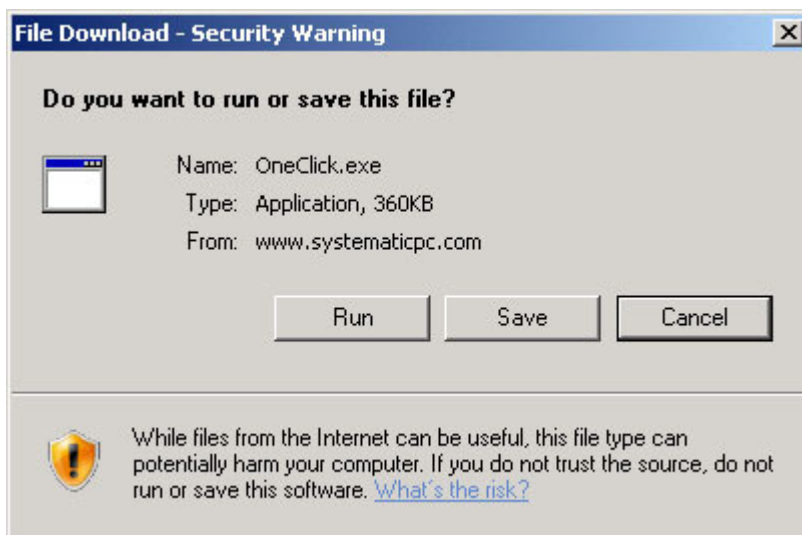


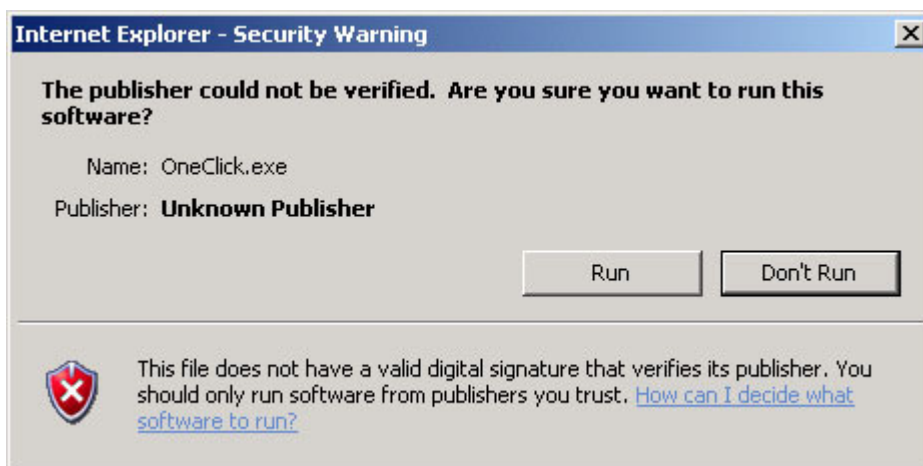
remote support instructions

Below are instructions for the remote support program for systematic PC. You will need to click on the Download Now button on the webpage to begin downloading the program. Then follow the instructions below.

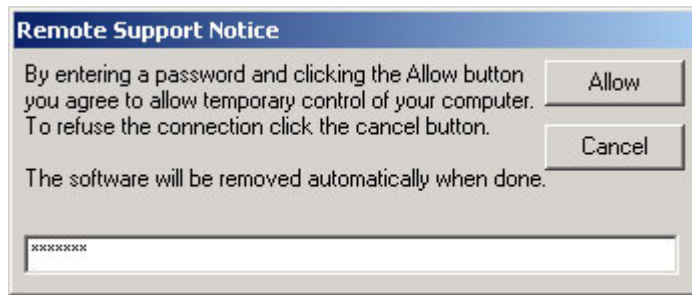
Click on Run.





Click on Run.



Enter the password (obtain password from systematic PC) and click on Allow.



After you click on Allow the program will attempt to connect your computer with systematic PC. While trying to connect a black logo  will appear in the task bar. The logo will turn green  when you are connected.

Once the session is complete systematic PC will close the connection.

Click on OK.



*If you are running Microsoft Vista™ you will receive a Program Compatibility Assistant dialogue box. Click on Cancel.

When the session has ended all remote support program files will automatically be removed from your computer.